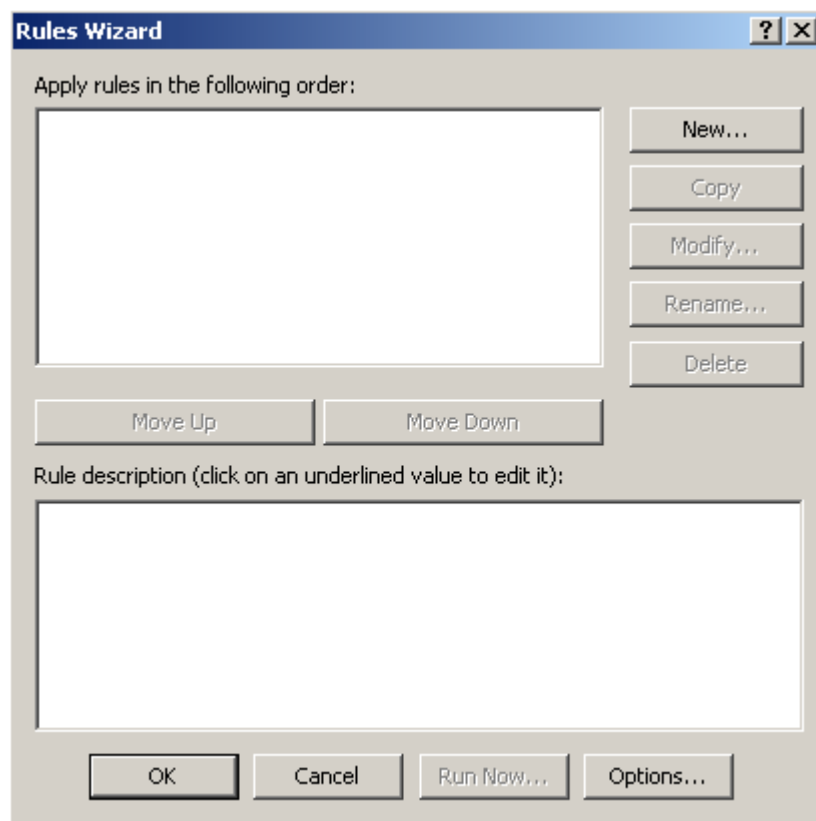




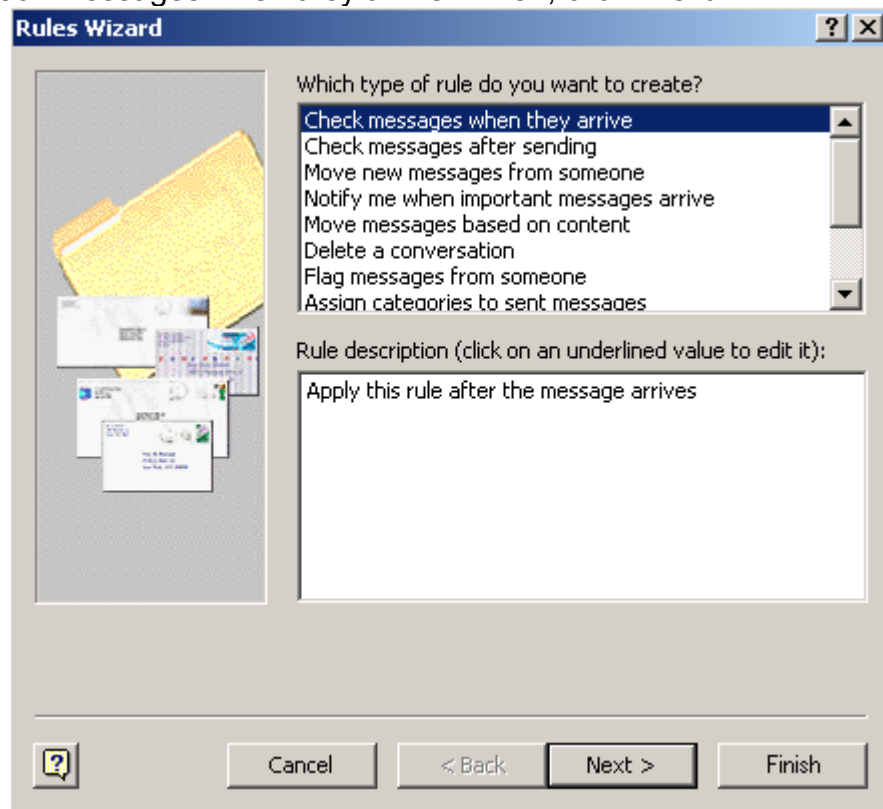
When an Email is processed through ISOMEDIA's SpamCatcher, the message header is tagged with asterisks ("*") indicating the likelihood that the message is spam. The more asterisks ("*") the Email header shows, the greater the likelihood it is spam.

To move these suspected Emails to a spam folder within Microsoft Outlook, use the following directions:

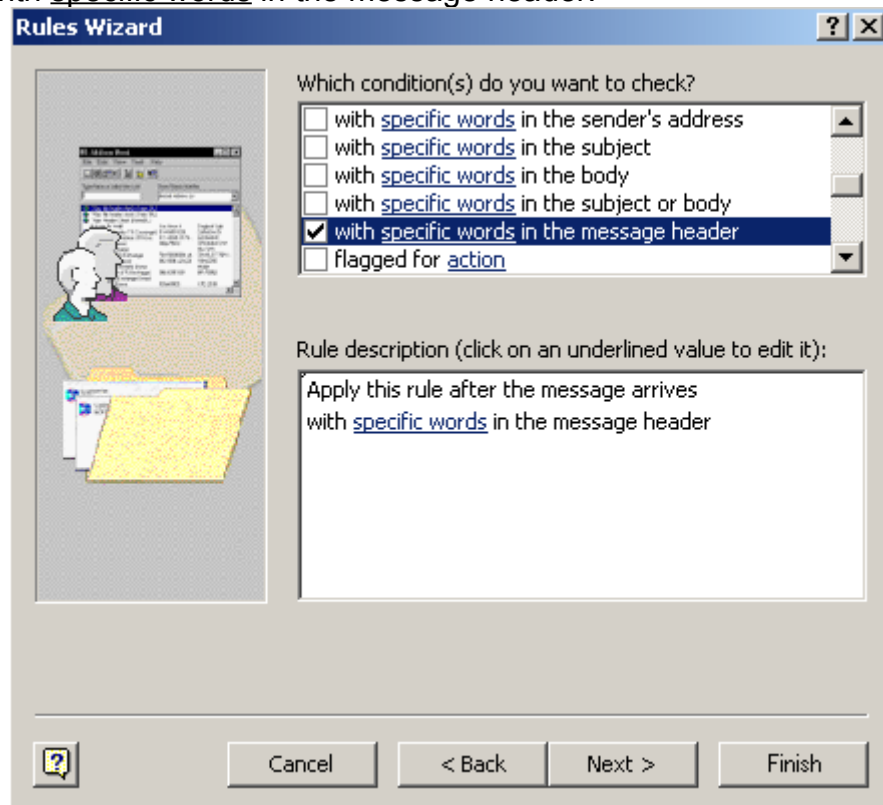
1. Open Microsoft Outlook and select "Rules Manager" under "Tools."
2. Click the "New" button to create a new rule.



3. Select "Check messages when they arrive." Then, click "Next."

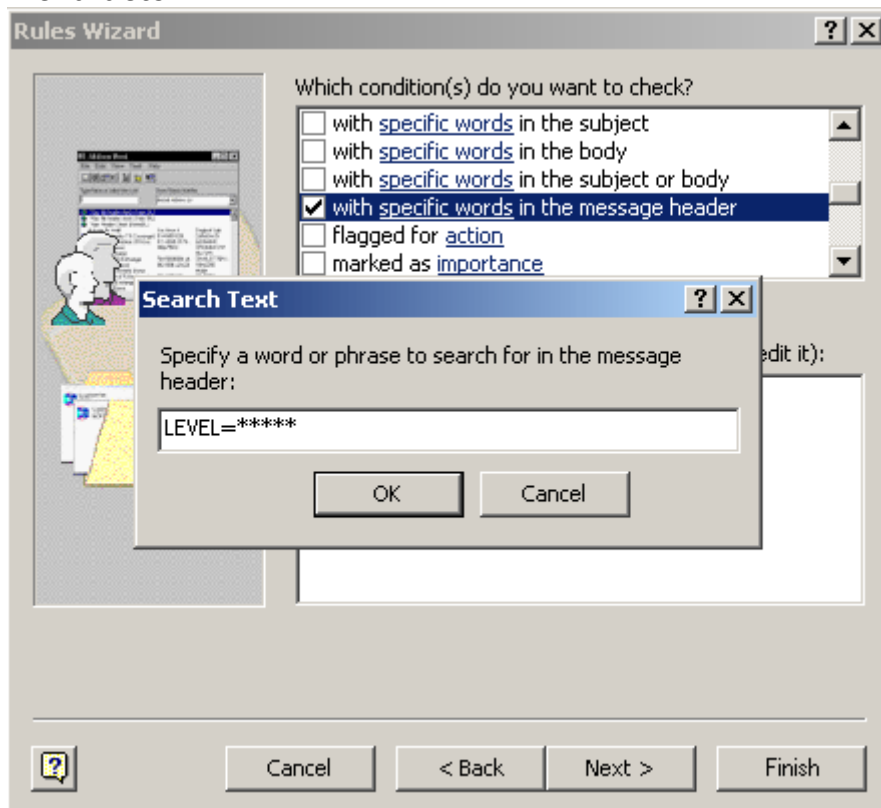


4. Check > "with specific words in the message header."

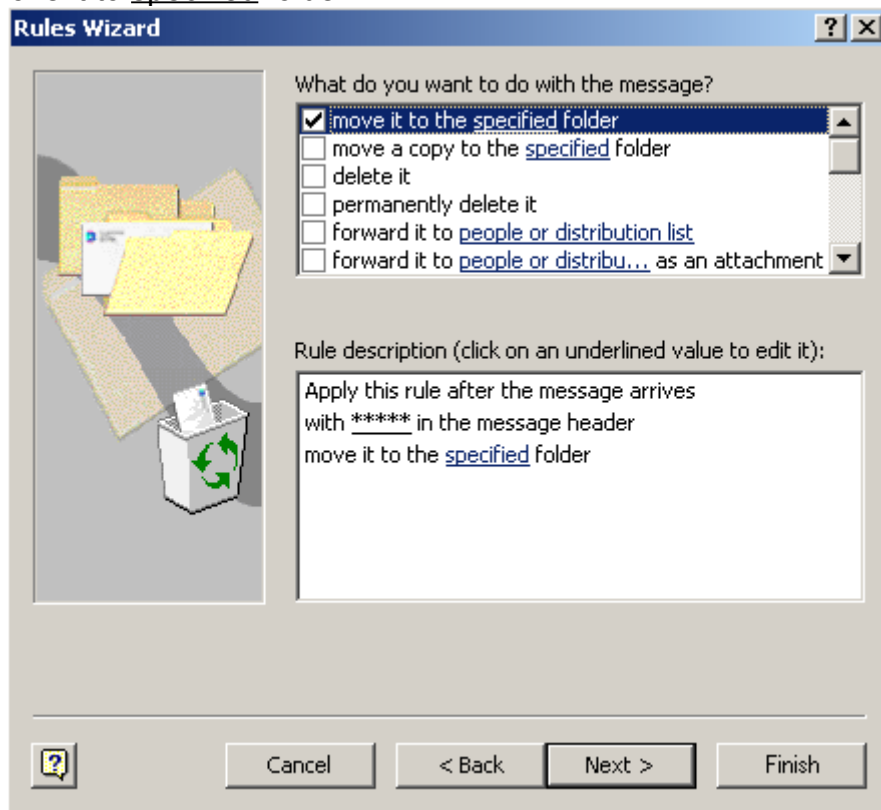


5. Then, click specific words. Type "LEVEL= " with as many asterisks ("*") as you wish (start with 10 asterisks ("**") for moderate tolerance, and subtract to add more aggressiveness; 5 asterisks will most likely catch all spam). Then, click "Next."

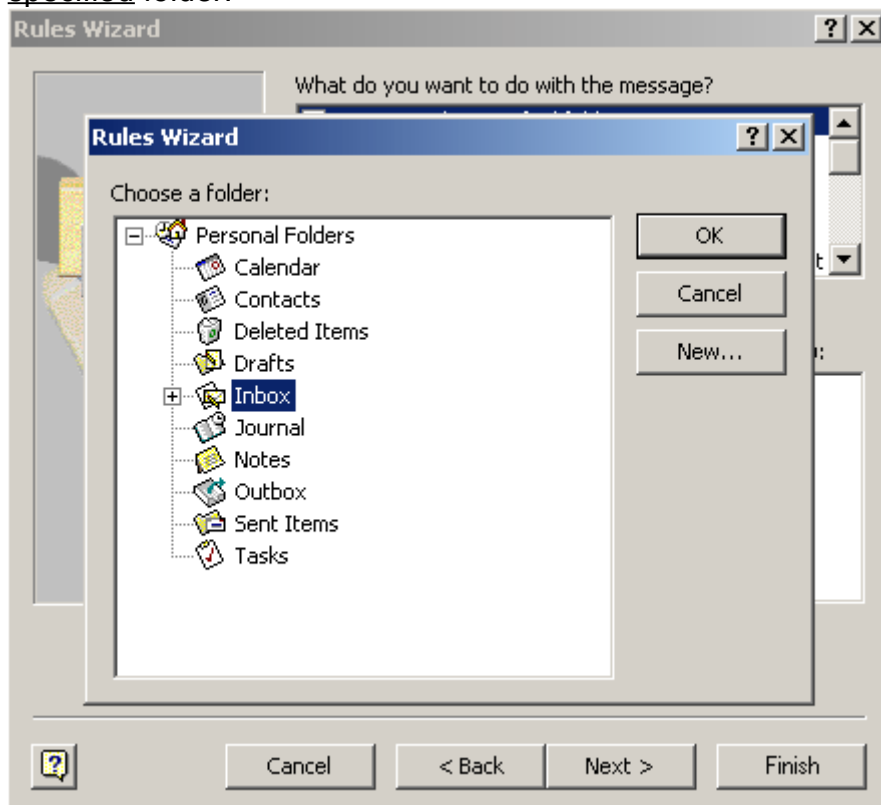
NOTE: The graphic below is incorrect, there should be a space between the "=" and first "*" character.



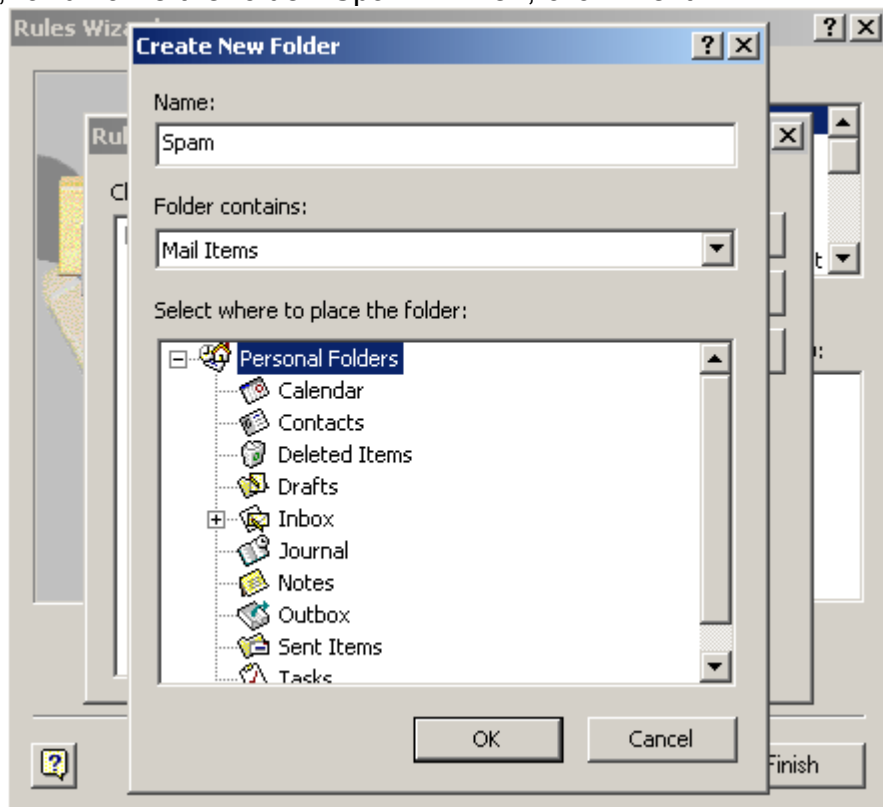
6. Check > “move it to specified folder.”



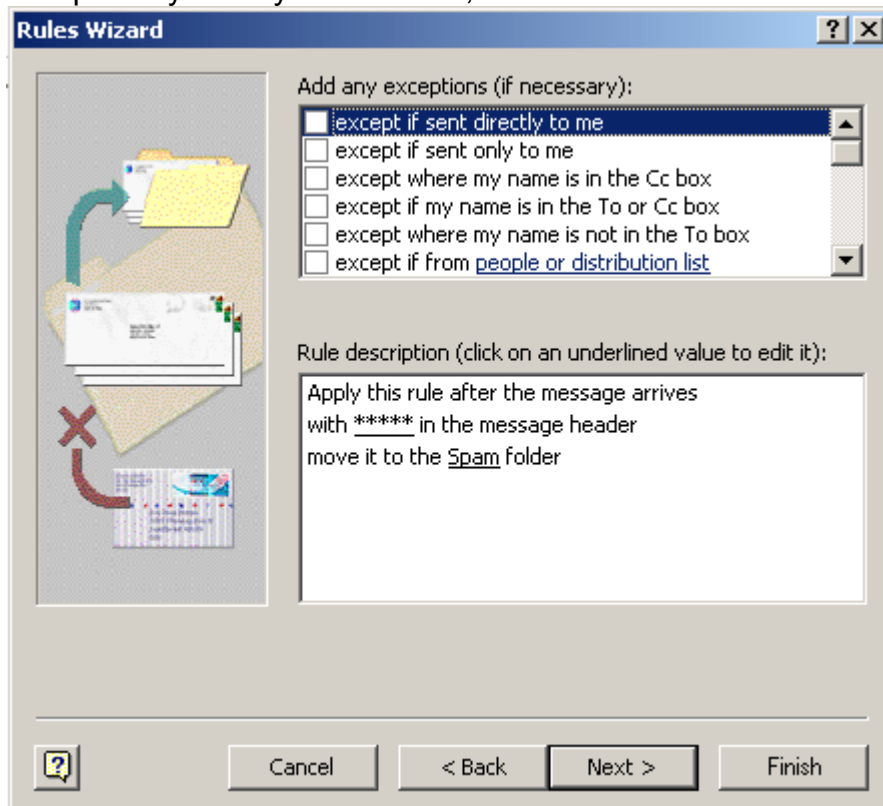
7. Then, click specified folder.



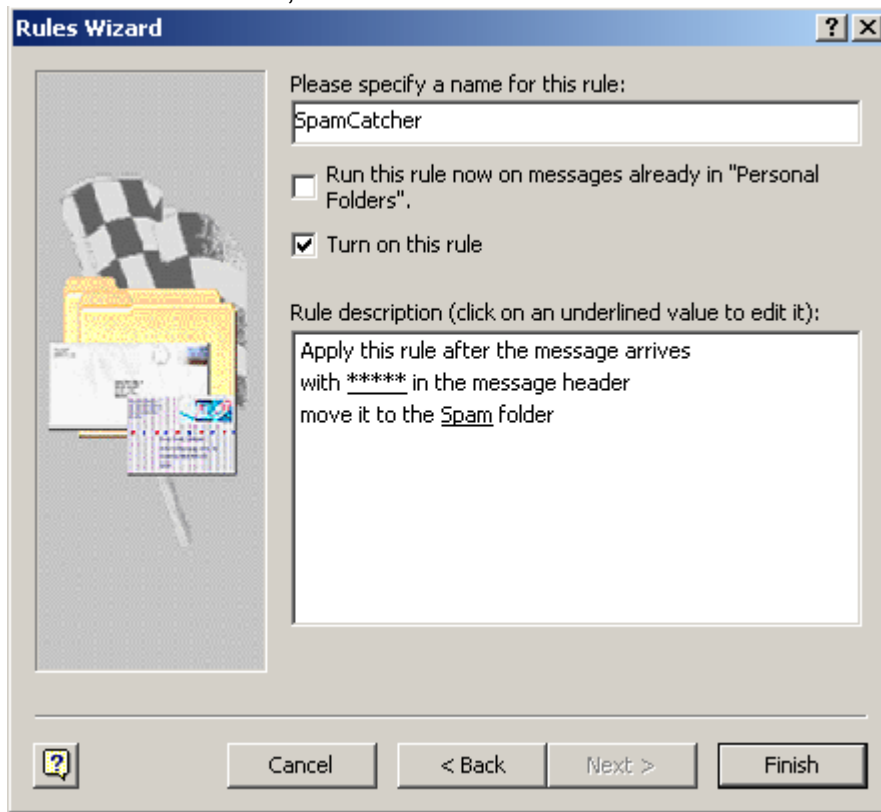
8. Click “New,” and name the folder “Spam.” Then, click “Next.”



9. Check any exceptions you may want. Then, click “Next.”



10. You can name the rule. Then, click “Finish.”



To setup auto delete on your “spam” folder once you have set it up, use the following directions:

1. Right-click on the “spam” folder, and select “Properties.”
2. Click on the “Auto Archive” tab.
3. Check > “Clean out items older than.” Select the time you want to keep the Emails (in case you want to look through and make sure you have lost anything you may have wanted).
4. Check > “Permanently delete old items.”
4. Click “Ok.”